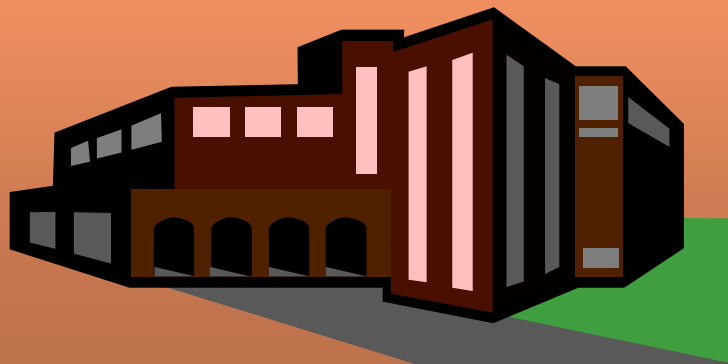


# CALIFORNIA STATE UNIVERSITY

APPLICATION WORKSHOP  
OCTOBER 15, 2009





## WHERE TO START

- [www.csumentor.edu](http://www.csumentor.edu)
- Filing period: October 1 through November 30
- File one application at a time, then return to CSU Mentor to complete each subsequent application.
- Report SAT or ACT scores directly from College Board to CSU Mentor by using the CSU code, **3594** .

## California Student ID Number

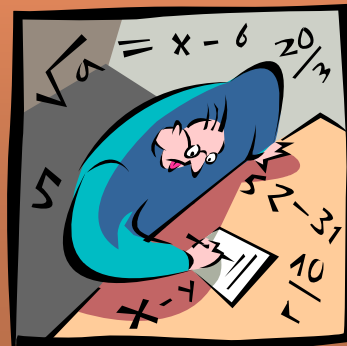
- This ten digit number can be found on your Zangle transcript, which you may pick up at the Counseling Counter, or you may download all of this information at home from the Zangle website. See Mrs. Kunz in the Counseling Office if you do not know your access codes.

## EPT and ELM

- Check EAP results by going to the EAP site at [www.calstate.edu/eap/results](http://www.calstate.edu/eap/results)
- You may also fulfill the EPT and ELM requirements by scoring a 550 on the SAT Reasoning Critical Reading or Math sections, or by scoring a 24(English) or 23(Math) sections of the ACT.
- You may also fulfill the requirement by way of the SAT Subject Tests or the AP Exams. See your counselor for information.

## EPT and ELM, continued

- If you have not satisfied the requirement by spring of 2010, you need to take the EPT and/or ELM exams, offered by the CSU system at most campuses. Information will be sent to you by your intended campus.



## BEFORE WE BEGIN THE APPLICATION...

- Have your transcript available
- Read all directions!
- Use the tutorial!
- Check with your counselor before submitting!
- Print a paper copy for your records
- Keep your user name and password for future reference.



## HOUSING AND FINANCIAL AID

- Follow all housing deadlines!
- Be sure to file the FAFSA as soon as possible after January 1, 2010.
- Secure your FAFSA PIN before January.
- Don't forget to pick up the NPHS Scholarship Bulletin each month in the College and Career Center or on Noviance!.



# ASSIST!

- You will find that [www.assist.org](http://www.assist.org) is an excellent place to explore majors, transfer opportunities, articulation among the Community Colleges, the CSU, and the UC.

## AND NOW...

- Let's go to the application at [www.csumentor.edu](http://www.csumentor.edu)

(At this point, counselors accessed the CSU application online and, as they completed it, the audience was able to view it on the large screen on the stage.)

# NEXT WEEK!

- University of California Application Workshop
- October 22, 2009
- 7:00 P.M.
- Bring an unofficial transcript

